

**TOTAL CCWD PRODUCTION (MG) ALL SOURCES- FY 2024**

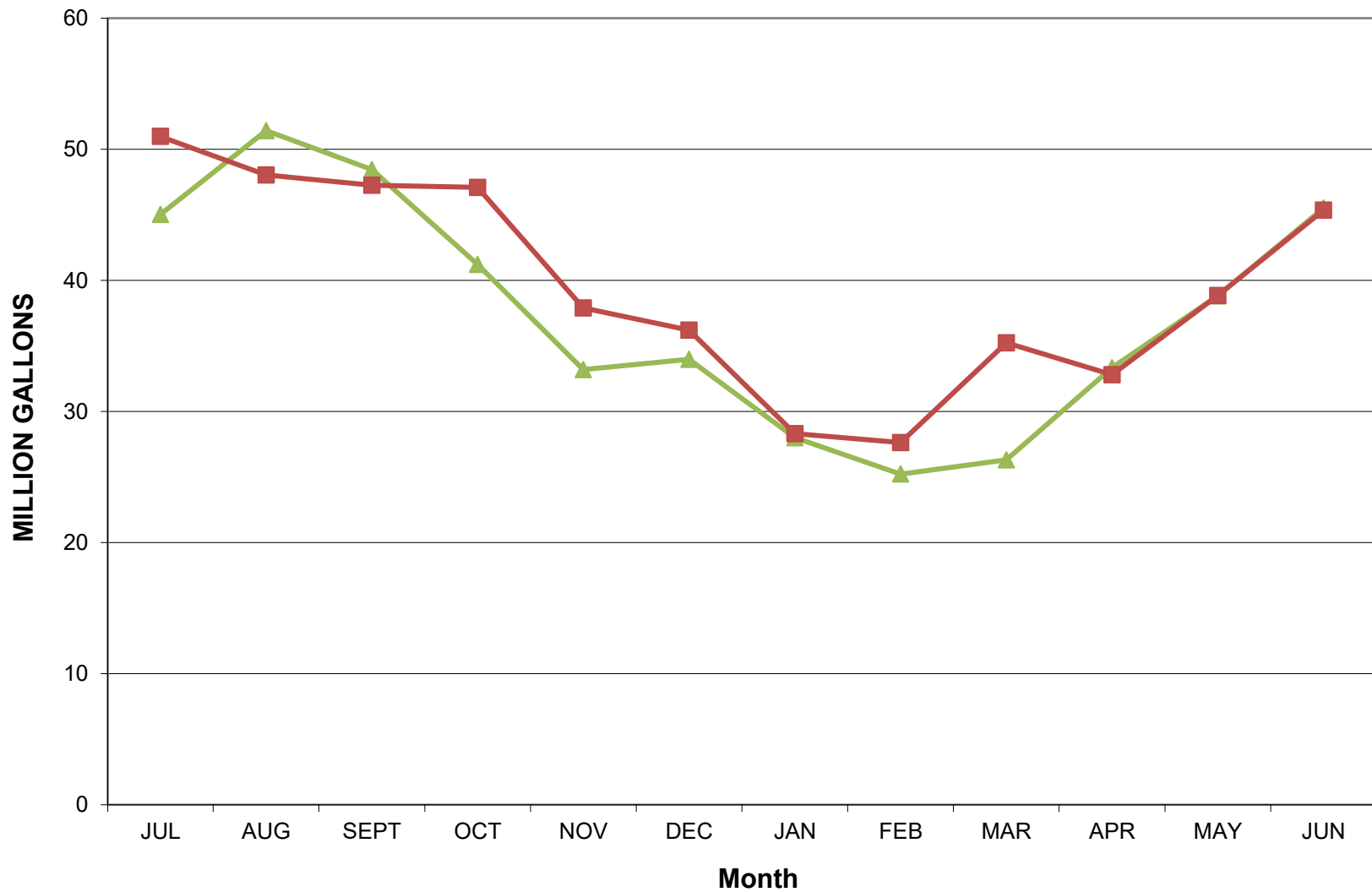
	CCWD Sources			SFPUC Sources		RAW WATER TOTAL	UNMETERED WATER	TREATED TOTAL
	DENNISTON WELLS	DENNISTON RESERVOIR	PILARCITOS WELLS	PILARCITOS LAKE	CRYSTAL SPRINGS RESERVOIR			
JUL	0.32	17.08	0.00	30.54	6.02	53.64	2.66	50.98
AUG	2.37	22.03	0.00	23.30	6.40	51.73	3.69	48.04
SEPT	2.31	18.49	0.00	24.22	8.42	51.13	3.87	47.26
OCT	0.51	6.09	0.00	37.04	6.54	49.67	2.58	47.09
NOV	0.05	15.80	11.9	9.68	2.94	40.32	2.42	37.90
DEC	0.00	7.40	17.29	11.08	2.46	38.23	2.03	36.20
JAN	0.00	4.60	15.68	10.14	0.00	30.42	2.11	28.31
FEB	0.00	0.00	15.84	13.16	0.00	29.00	1.37	27.63
MAR	0.00	2.90	13.13	16.81	4.33	37.17	1.94	35.23
APR	0.00	12.90	0.00	22.99	1.09	36.98	4.19	32.79
MAY	0.14	6.30	0.00	34.52	3.13	43.95	5.11	38.84
JUN	0.00	6.60	0.00	40.43	2.47	49.50	4.15	45.35
<b>TOTAL</b>	5.70	120.19	73.84	273.91	43.80	511.74	36.12	475.62
% MONTHLY TOTAL	0.0%	13.3%	0.0%	81.7%	5.0%	100.0%	8.4%	91.6%
% ANNUAL TO DATE TOTAL	n/a	23.5%	14.4%	53.5%	8.6%	100.0%	7.1%	92.9%

CCWD vs SFPUC- month 13.3%  
 CCWD vs SFPUC- annual 37.9%

**TOTAL CCWD PRODUCTION (MG) ALL SOURCES- FY 2023**

	CCWD Sources			SFPUC Sources		RAW WATER TOTAL	UNMETERED WATER	TREATED TOTAL
	DENNISTON WELLS	DENNISTON RESERVOIR	PILARCITOS WELLS	PILARCITOS LAKE	CRYSTAL SPRINGS RESERVOIR			
JUL	1.92	6.25	0.00	39.07	0.42	47.66	2.63	45.03
AUG	1.70	5.45	0.00	38.23	8.94	54.32	2.90	51.42
SEPT	1.65	5.86	0.00	15.86	27.69	51.06	2.62	48.44
OCT	0.57	3.62	0.00	37.14	3.13	44.46	3.25	41.21
NOV	0.54	13.55	7.66	11.91	2.57	36.23	3.04	33.19
DEC	0.37	10.59	15.88	7.30	2.26	36.40	2.42	33.98
JAN	0.00	0.00	24.62	4.53	0.00	29.15	1.15	28.00
FEB	0.00	0.00	24.29	2.56	0.00	26.85	1.62	25.23
MAR	0.00	0.00	26.21	2.19	0.00	28.40	2.09	26.31
APR	0.00	14.00	0.00	21.47	0.09	35.56	2.22	33.34
MAY	0.00	29.40	0.00	8.40	5.00	42.80	3.98	38.82
JUN	0.00	28.20	0.00	17.17	2.78	48.15	2.63	45.52
<b>TOTAL</b>	6.75	116.92	98.66	205.83	52.88	481.04	30.55	450.49
% Annual Total	1.4%	24.3%	20.5%	42.8%	11.0%	100.0%	9.3%	90.7%

Monthly Production FY 23 vs 24



**Cumulative Production FY23 vs FY24**

