

**TOTAL CCWD PRODUCTION (MG) ALL SOURCES- FY 2023**

0.23

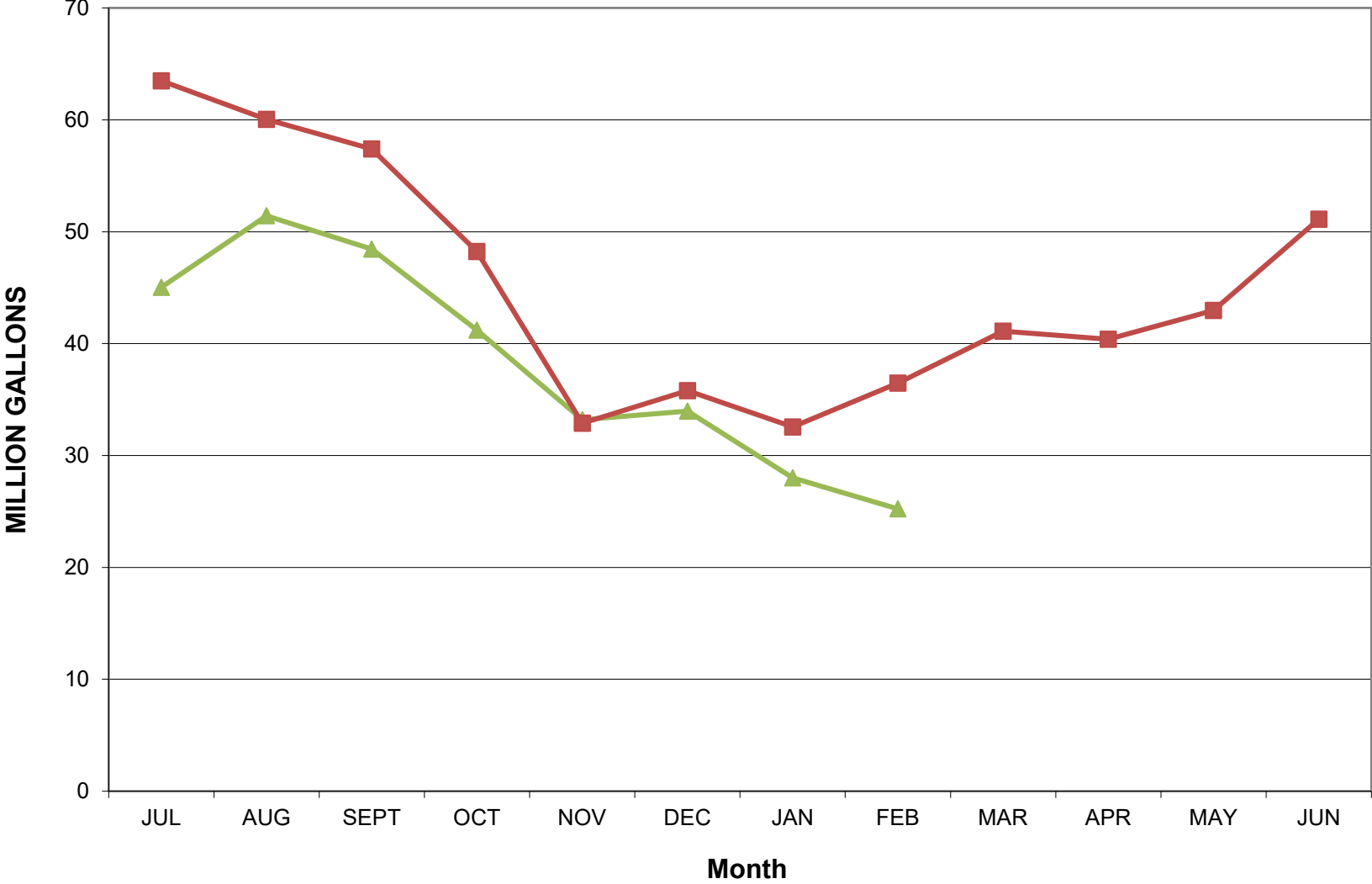
	CCWD Sources			SFPUC Sources		RAW WATER TOTAL	UNMETERED WATER	TREATED TOTAL
	DENNISTON WELLS	DENNISTON RESERVOIR	PILARCITOS WELLS	PILARCITOS LAKE	CRYSTAL SPRINGS RESERVOIR			
<b>JUL</b>	1.92	6.25	0.00	39.07	0.42	47.66	2.63	45.03
<b>AUG</b>	1.70	5.45	0.00	38.23	8.94	54.32	2.90	51.42
<b>SEPT</b>	1.65	5.86	0.00	15.86	27.69	51.06	2.62	48.44
<b>OCT</b>	0.57	3.62	0.00	37.14	3.13	44.46	3.25	41.21
<b>NOV</b>	0.54	13.55	7.66	11.91	2.57	36.23	3.04	33.19
<b>DEC</b>	0.37	10.59	15.88	7.30	2.26	36.40	2.42	33.98
<b>JAN</b>	0.00	0.00	24.62	4.53	0.00	29.15	1.15	28.00
<b>FEB</b>	0.00	0.00	24.29	2.56	0.00	26.85	1.62	25.23
<b>MAR</b>								
<b>APR</b>								
<b>MAY</b>								
<b>JUN</b>								
<b>TOTAL</b>	6.75	45.32	72.45	156.60	45.01	326.13	19.63	306.50
% MONTHLY TOTAL	0.0%	0.0%	90.5%	9.5%	0.0%	100.0%	6.0%	94.0%
% ANNUAL TO DATE TOTAL	2.1%	13.9%	22.2%	48.0%	13.8%	100.0%	6.0%	94.0%

CCWD vs SFPUC- month 90.5%  
 CCWD vs SFPUC- annual 38.2%

**12 Month Running Treated Total 473.57**  
**TOTAL CCWD PRODUCTION (MG) ALL SOURCES- FY 2022**

	CCWD Sources			SFPUC Sources		RAW WATER TOTAL	UNMETERED WATER	TREATED TOTAL
	DENNISTON WELLS	DENNISTON RESERVOIR	PILARCITOS WELLS	PILARCITOS LAKE	CRYSTAL SPRINGS RESERVOIR			
<b>JUL</b>	0.00	0.00	0.00	0.00	65.93	65.93	2.44	63.49
<b>AUG</b>	0.00	0.00	0.00	0.00	61.90	61.90	1.86	60.04
<b>SEPT</b>	0.00	0.00	0.00	0.00	59.74	59.74	2.34	57.40
<b>OCT</b>	0.53	1.57	0.00	3.69	44.32	50.11	1.87	48.24
<b>NOV</b>	1.62	17.20	9.78	0.00	7.87	36.47	3.58	32.89
<b>DEC</b>	0.69	5.75	21.2	0.00	10.80	38.44	2.64	35.80
<b>JAN</b>	0.00	7.62	24.44	0.00	3.16	35.22	2.66	32.56
<b>FEB</b>	0.00	14.10	21.88	0.00	3.63	39.61	3.13	36.48
<b>MAR</b>	0.00	14.97	24.71	0.00	5.16	44.84	3.72	41.12
<b>APR</b>	2.33	23.27	0.00	9.22	9.25	44.07	3.68	40.39
<b>MAY</b>	2.15	19.30	0.00	22.75	2.61	46.81	3.84	42.97
<b>JUN</b>	1.91	12.20	0.00	35.05	5.04	54.20	3.08	51.12
<b>TOTAL</b>	9.23	115.98	102.01	70.71	279.41	577.34	34.84	542.50
% TOTAL	1.6%	20.1%	17.7%	12.2%	48.4%	100.0%	6.0%	94.0%

Monthly Production FY 22 vs FY 23



Cumulative Production FY22 vs FY23

