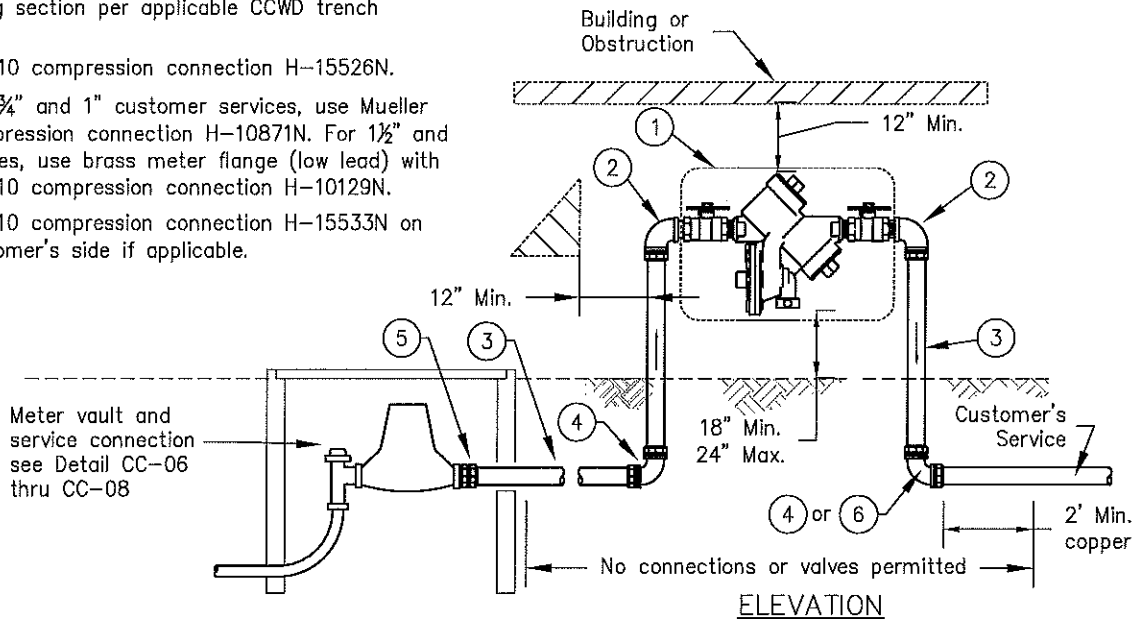


LEGEND

- ① Backflow prevention, shall be U.S.C. approved assembly.
- ② Brass 90° bends, Mueller H-15531N.
- ③ Copper Pipe, Utility sand shall be placed 2" below and 6" above copper line. Backfill and compact remaining section per applicable CCWD trench details.
- ④ Mueller 110 compression connection H-15526N.
- ⑤ For 5/8", 3/4" and 1" customer services, use Mueller 110 compression connection H-10871N. For 1 1/2" and 2" services, use brass meter flange (low lead) with Mueller 110 compression connection H-10129N.
- ⑥ Mueller 110 compression connection H-15533N on the customer's side if applicable.



REQUIREMENTS

- 1. A backflow prevention assembly must be installed on Non-Single Family Residential services and Single Family Residential service connections that have an auxiliary water supply, a cross connection, or a risk of backflow or contamination.
- 2. All reduced pressure backflow assemblies shall be installed on the customer's property adjacent to the meter. Pressure reducing valves on the District pipelines will not be permitted.
- 3. Contractor shall furnish all labor, equipment, and material to connect water service to the customer line.
- 4. Any enclosure used for backflow assembly shall be approved by the District.
- 5. Backflow assembly shall be tested and certified by the District approved tester prior to being put in service.
- 6. Vertical installations are allowed but require District approval prior to design and installation.

**REDUCED PRESSURE BACKFLOW
PREVENTER ASSEMBLY (UP TO 2")**

REV. 05/2018

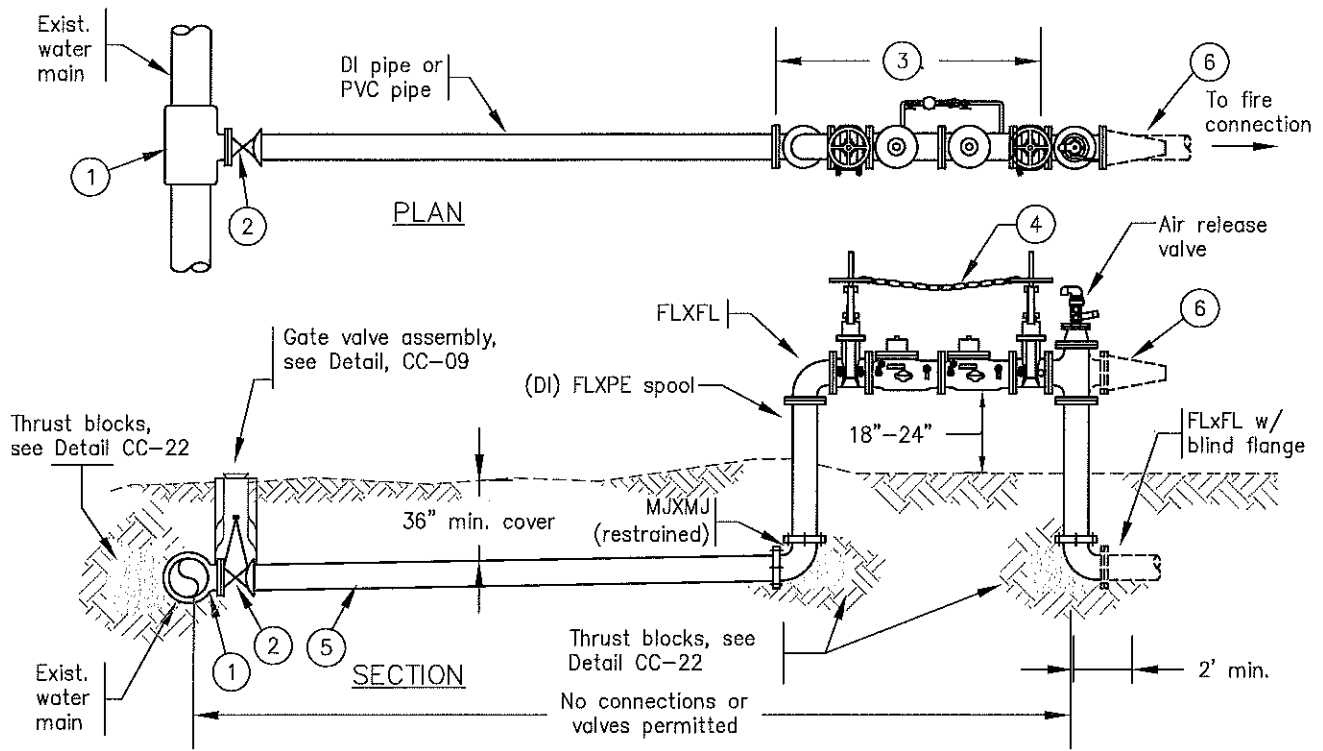


COASTSIDE COUNTY
WATER DISTRICT
766 MAIN STREET
HALF MOON BAY, CA

Approved by:

David Dickson, General Manager

**STD. NO.
CC-18**



REQUIREMENTS

1. Double check detector assemblies shall be required on all non-residential and non-single family fire service connections.
2. Any enclosure used for backflow assembly shall be approved by the District.
3. Backflow assembly shall be tested and certified by the District approved tester prior to being put in service.
4. Vertical installations are allowed but require District approval prior to design and installation.

NOTES

1. The size of the piping, tapping valve, detector check and backflow preventer shall be determined in accordance with fire service flow requirements.
2. Fire service location shall be determined by District.
7. Assembly shall be protected by bollards/guard posts when located near traffic areas, as required by the District.

LEGEND

- ① Tee or Tapping sleeve JCM 6432, as directed by the District
- ② Gate valve, FL x MJ, Mueller No. A-2362
- ③ U.S.C. approved double check detector assembly, and OS&Y shutoff valves as required by local fire department.
- ④ 1/2" stainless steel chain with minimum slack
- ⑤ DI/PVC pipe, backfill and compact per applicable CCWD trench details.
- ⑥ Tee (FLxFLxFL) or optional cross and siamese fire dept. connection (2-1/2"x2-1/2"). Clearance and orientation as required by the fire department.

**FIRE SERVICE CONNECTION
REQUIREMENTS (2.5" AND LARGER)**

REV. 05/2018



COASTSIDE COUNTY
WATER DISTRICT
766 MAIN STREET
HALF MOON BAY, CA

Approved by:
David Dickson, General Manager
David Dickson

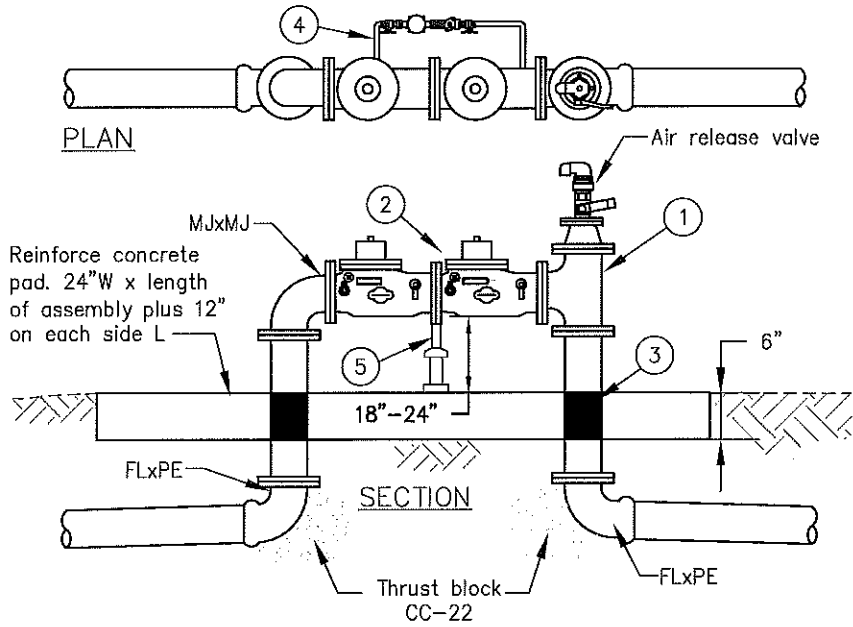
**STD. NO.
CC-19**

NOTES:

1. Notify the District prior to installation of assembly.
2. Double check valve backflow prevention assembly and Reduced pressure principle backflow prevention assembly shall be U.S.C. approved assembly. Entire assemblies including isolation valve, test cocks and bypass meter (if required shall be provided as a complete unit.
3. Installation shall be comply with the latest plumbing codes and applicable local agency requirements. Check with local building department if a permit is required.
4. The appropriate easements must be dedicated to the District prior to plan approval.
5. Backflow preventers 3" and larger shall be supported by galvanized pipe saddle supports.
6. Installation required by Title 17 of the California Code of Regulations and the State Water Resources Control Board, Division of Drinking Water.
7. Assembly shall be protected by bollards/guard posts when located near traffic areas, as required by the District.
8. No connections or tee will be allowed between meter or District isolation valve and backflow preventer.
9. Device must be accessible for testing and maintenance. Location shall be approved by District prior to installation.
10. Installations using threaded or soldered fitting shall include one three part union on each side of the assembly. Solder shall be lead free.
11. Assemblies installed in areas subject to vandalism shall be enclosed in a cage. Cage shall provide 12" minimum clearance all around and shall be submitted to the District for approval optional.
12. Backflow assembly shall be tested and certified by the District approved tester prior to being put in service.


LEGEND

- ① Tee (FixFLxFL) with 2" IP for ARV connection on top.
- ② Double check detector assembly/reduced pressure backflow assembly as approved by U.S.C.
- ③ CALPICO VI-10 protective tape or equal.
- ④ Factory installed by-pass meter and U.S.C. approved backflow prevention device.
- ⑤ Galvanized adjustable pipe support shall be Grinell Fig. 264, Elcen Fid 40, or equal. support shall be galvanized after fabrication.



DOUBLE CHECK BACKFLOW ASSEMBLY & REDUCED PRESSURE BACKFLOW DEVICE

REV. 05/2018

 <p>COASTSIDE COUNTY WATER DISTRICT 766 MAIN STREET HALF MOON BAY, CA</p>	Approved by:	<p>STD. NO. CC-20</p>
	David Dickson, General Manager 