

TOTAL CCWD PRODUCTION (MG) ALL SOURCES- FY 2018

	CCWD Sources			SFPUC Sources		RAW WATER TOTAL	UNMETERED WATER	TREATED TOTAL
	DENNISTON WELLS	DENNISTON RESERVOIR	PILARCITOS WELLS	PILARCITOS LAKE	CRYSTAL SPRINGS RESERVOIR			
JUL	0.87	25.93	0.00	0.00	45.87	72.67	3.45	69.22
AUG	2.32	24.89	0.00	0.00	42.86	70.07	3.85	66.22
SEPT	2.21	19.72	0.00	0.00	38.88	60.81	3.80	57.01
OCT	1.63	15.79	0.00	0.00	50.08	67.50	3.37	64.13
NOV	4.82	21.54	18.4	0.00	12.45	57.21	2.57	54.64
DEC	0.09	22.00	14.32	0.00	10.04	46.45	3.25	43.20
JAN	0.09	15.70	11.20	0.00	11.40	38.39	3.15	35.24
FEB	0.00	20.02	9.37	0.00	14.41	43.80	2.58	41.22
MAR	6.23	10.02	20.92	0.00	15.43	52.60	3.61	48.99
APR	0.00	12.06	0.00	10.80	21.93	44.79	2.53	42.26
MAY	0.93	26.33	0.00	26.75	5.00	59.01	2.64	56.37
JUN	2.71	17.64	0.00	31.50	9.70	61.55	3.23	58.32
TOTAL	21.90	231.64	74.21	69.05	278.05	674.85	38.03	636.82
% MONTHLY TOTAL	4.40%	28.66%	0.00%	51.18%	15.76%	100.00%	5.25%	94.75%
% ANNUAL TO DATE TOTAL	3.2%	34.3%	11.0%	10.2%	41.2%	100.0%	5.64%	94.4%

CCWD vs SFPUC- month 33.1% 66.9%
 CCWD vs SFPUC- annual 48.6% 51.4%

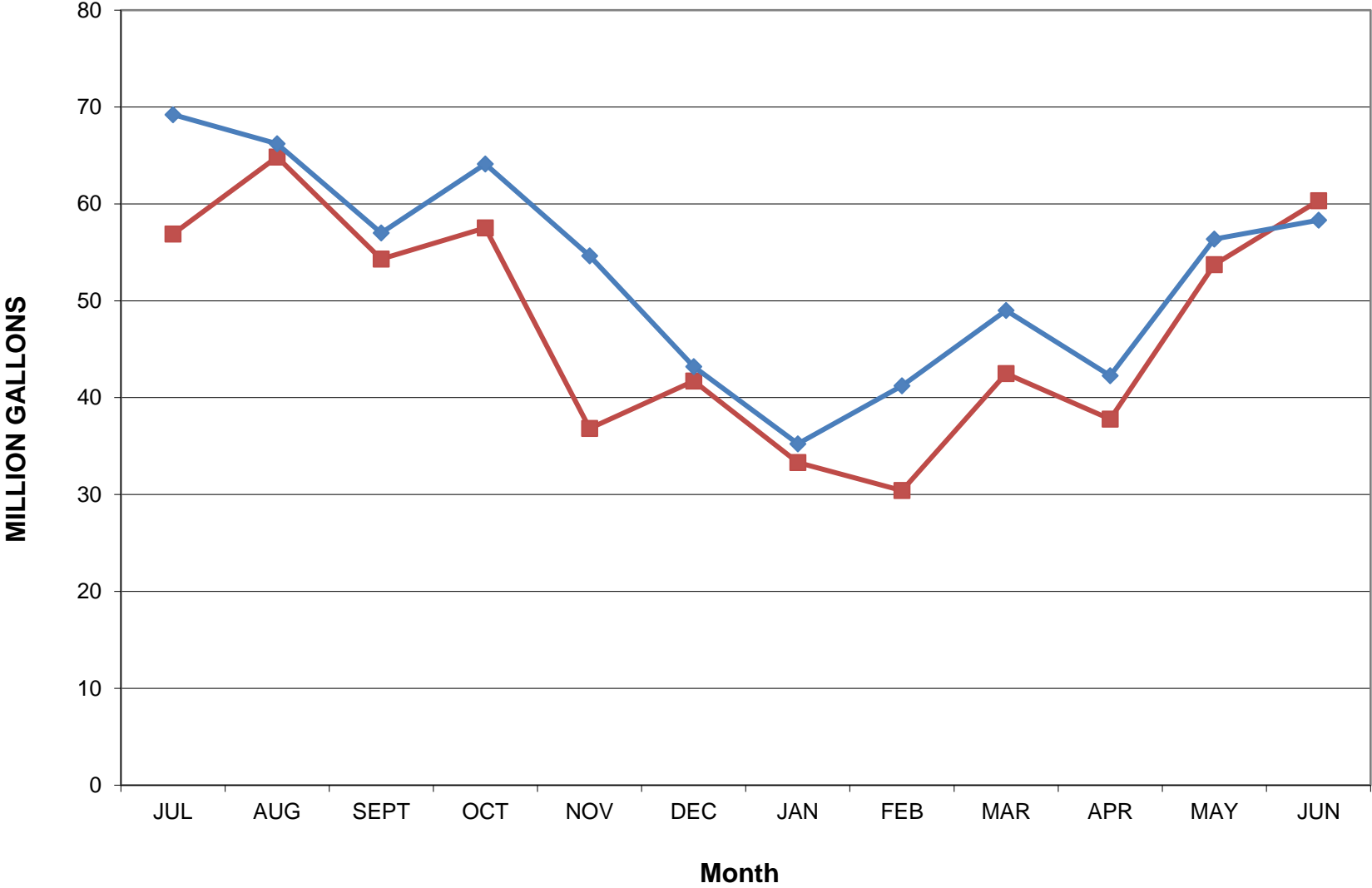
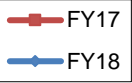
12 Month Running Treated Total

636.82

TOTAL CCWD PRODUCTION (MG) ALL SOURCES- FY 2017

	DENNISTON WELLS	DENNISTON RESERVOIR	PILARCITOS WELLS	PILARCITOS RESERVOIR	CRYSTAL SPRINGS RESERVOIR	RAW WATER TOTAL	UNMETERED WATER	TREATED TOTAL
JUL	1.58	15.50	0.00	37.11	7.05	61.24	4.36	56.88
AUG	2.55	10.84	0.00	4.40	51.18	68.97	4.12	64.85
SEPT	2.28	10.35	0.00	0.00	45.04	57.67	3.37	54.30
OCT	0.49	1.71	0.00	0.00	57.09	59.29	1.76	57.53
NOV	0.01	1.13	10.91	0.00	26.92	38.97	2.15	36.82
DEC	0.00	13.01	13.18	0.00	17.59	43.78	2.05	41.73
JAN	0.00	2.32	18.25	0.00	14.98	35.55	2.24	33.31
FEB	0.00	0.00	23.75	4.01	6.36	34.12	3.72	30.41
MAR	0.43	5.18	25.41	13.01	1.80	45.83	3.33	42.50
APR	0.00	14.05	0.00	25.41	1.87	41.33	3.54	37.79
MAY	0.00	24.60	0.00	29.40	3.25	57.25	3.53	53.72
JUN	0.41	24.25	0	21.59	17.65	63.90	3.58	60.32
TOTAL	7.75	122.94	91.50	134.93	250.78	607.90	37.75	570.14
% TOTAL	1.3%	20.2%	15.1%	22.2%	41.3%	100.0%	6.21%	93.8%

Monthly Production FY 17 vs FY 18



Cumulative Production FY 17 vs FY18

