

TOTAL CCWD PRODUCTION (MG) ALL SOURCES- FY 2018

	CCWD Sources			SFPUC Sources		RAW WATER TOTAL	UNMETERED WATER	TREATED TOTAL
	DENNISTON WELLS	DENNISTON RESERVOIR	PILARCITOS WELLS	PILARCITOS LAKE	CRYSTAL SPRINGS RESERVOIR			
JUL	0.87	25.93	0.00	0.00	45.87	72.67	3.45	69.22
AUG	2.32	24.89	0.00	0.00	42.86	70.07	3.85	66.22
SEPT	2.21	19.72	0.00	0.00	38.88	60.81	3.80	57.01
OCT	1.63	15.79	0.00	0.00	50.08	67.50	3.37	64.13
NOV	4.82	21.54	18.4	0.00	12.45	57.21	2.57	54.64
DEC	0.09	22.00	14.32	0.00	10.04	46.45	3.25	43.20
JAN	0.09	15.70	11.20	0.00	11.40	38.39	3.15	35.24
FEB	0.00	20.02	9.37	0.00	14.41	43.80	2.58	41.22
MAR	6.23	10.02	20.92	0.00	15.43	52.60	3.61	48.99
APR	0.00	12.06	0.00	10.80	21.93	44.79	2.53	42.26
MAY								
JUN								
TOTAL	18.26	187.67	74.21	10.80	263.35	554.29	32.16	522.13
% MONTHLY TOTAL	0.00%	26.93%	0.00%	24.11%	48.96%	100.00%	5.65%	94.35%
% ANNUAL TO DATE TOTAL	3.3%	33.9%	13.4%	1.9%	47.5%	100.0%	5.80%	94.2%

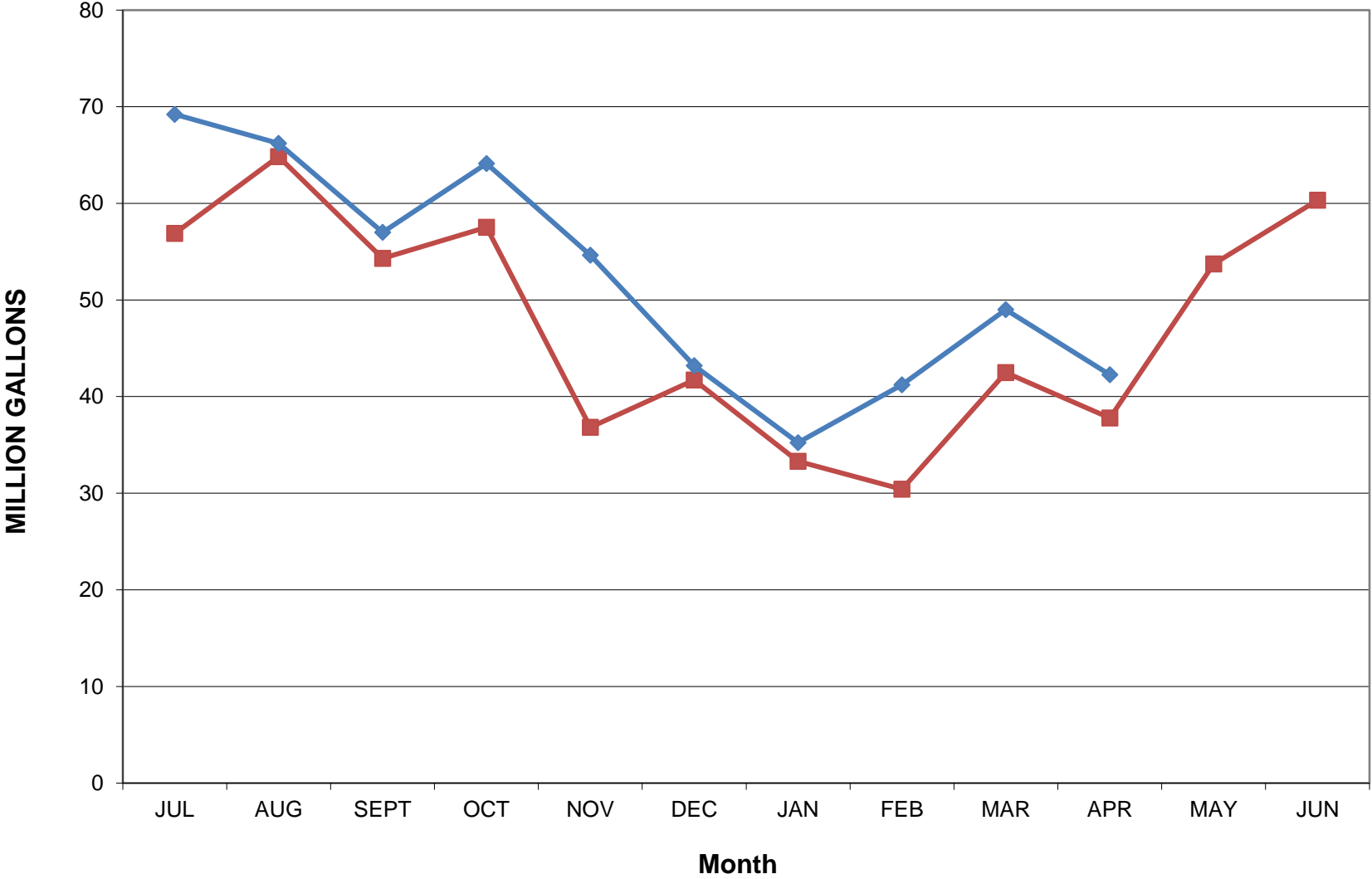
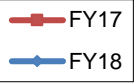
CCWD vs SFPUC- month 26.9% 73.1%
 CCWD vs SFPUC- annual 50.5% 49.5%

12 Month Running Treated Total **636.16**

TOTAL CCWD PRODUCTION (MG) ALL SOURCES- FY 2017

	DENNISTON WELLS	DENNISTON RESERVOIR	PILARCITOS WELLS	PILARCITOS RESERVOIR	CRYSTAL SPRINGS RESERVOIR	RAW WATER TOTAL	UNMETERED WATER	TREATED TOTAL
JUL	1.58	15.50	0.00	37.11	7.05	61.24	4.36	56.88
AUG	2.55	10.84	0.00	4.40	51.18	68.97	4.12	64.85
SEPT	2.28	10.35	0.00	0.00	45.04	57.67	3.37	54.30
OCT	0.49	1.71	0.00	0.00	57.09	59.29	1.76	57.53
NOV	0.01	1.13	10.91	0.00	26.92	38.97	2.15	36.82
DEC	0.00	13.01	13.18	0.00	17.59	43.78	2.05	41.73
JAN	0.00	2.32	18.25	0.00	14.98	35.55	2.24	33.31
FEB	0.00	0.00	23.75	4.01	6.36	34.12	3.72	30.41
MAR	0.43	5.18	25.41	13.01	1.80	45.83	3.33	42.50
APR	0.00	14.05	0.00	25.41	1.87	41.33	3.54	37.79
MAY	0.00	24.60	0.00	29.40	3.25	57.25	3.53	53.72
JUN	0.41	24.25	0	21.59	17.65	63.90	3.58	60.32
TOTAL	7.75	122.94	91.50	134.93	250.78	607.90	37.75	570.14
% TOTAL	1.3%	20.2%	15.1%	22.2%	41.3%	100.0%	6.21%	93.8%

Monthly Production FY 17 vs FY 18



Cumulative Production FY 17 vs FY18

