

**TOTAL CCWD PRODUCTION (MG) ALL SOURCES- FY 2019**

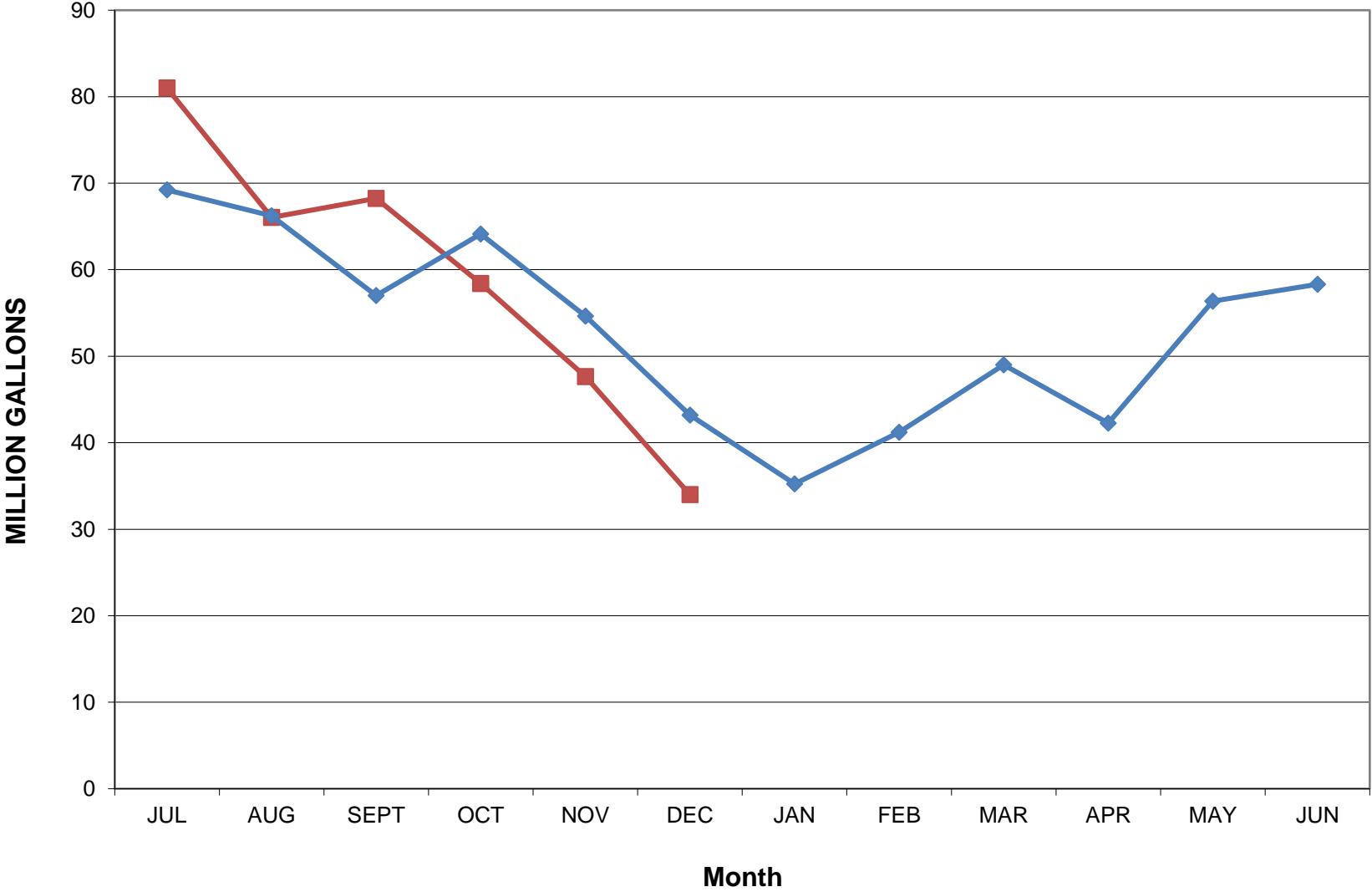
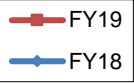
	CCWD Sources			SFPUC Sources		RAW WATER TOTAL	UNMETERED WATER	TREATED TOTAL
	DENNISTON WELLS	DENNISTON RESERVOIR	PILARCITOS WELLS	PILARCITOS LAKE	CRYSTAL SPRINGS RESERVOIR			
JUL	2.36	13.98	0.00	37.74	30.90	84.98	3.98	81.00
AUG	0.62	3.36	0.00	27.20	36.80	67.98	1.94	66.04
SEPT	0.00	0.00	0.00	30.48	39.24	69.72	1.48	68.24
OCT	0.00	0.00	0.00	22.98	37.51	60.49	2.09	58.40
NOV	0.00	0.00	5.78	0.00	44.10	49.88	2.24	47.64
DEC	1.31	11.50	14.35	7.12	2.78	37.06	3.07	33.99
JAN								
FEB								
MAR								
APR								
MAY								
JUN								
<b>TOTAL</b>	4.29	28.84	20.13	125.52	191.33	370.11	14.80	355.31
% MONTHLY TOTAL	3.5%	31.0%	38.7%	19.2%	7.5%	100.0%	8.3%	91.7%
% ANNUAL TO DATE TOTAL	1.2%	7.8%	5.4%	33.9%	51.7%	100.0%	4.0%	96.0%

CCWD vs SFPUC- month 73.3% 26.7%  
 CCWD vs SFPUC- annual 14.4% 85.6%

12 Month Running Treated Total **630.19**  
**TOTAL CCWD PRODUCTION (MG) ALL SOURCES- FY 2018**

	CCWD Sources			SFPUC Sources		RAW WATER TOTAL	UNMETERED WATER	TREATED TOTAL
	DENNISTON WELLS	DENNISTON RESERVOIR	PILARCITOS WELLS	PILARCITOS LAKE	CRYSTAL SPRINGS RESERVOIR			
JUL	0.87	25.93	0.00	0.00	45.87	72.67	3.45	69.22
AUG	2.32	24.89	0.00	0.00	42.86	70.07	3.85	66.22
SEPT	2.21	19.72	0.00	0.00	38.88	60.81	3.80	57.01
OCT	1.63	15.79	0.00	0.00	50.08	67.50	3.37	64.13
NOV	4.82	21.54	18.4	0.00	12.45	57.21	2.57	54.64
DEC	0.09	22.00	14.32	0.00	10.04	46.45	3.25	43.20
JAN	0.09	15.70	11.20	0.00	11.40	38.39	3.15	35.24
FEB	0.00	20.02	9.37	0.00	14.41	43.80	2.58	41.22
MAR	6.23	10.02	13.4	0.00	15.43	45.08	3.61	41.47
APR	0.00	12.06	0.00	10.80	21.93	44.79	2.53	42.26
MAY	0.93	26.33	0.00	26.75	5.00	59.01	2.64	56.37
JUN	2.71	17.64	0.00	31.50	9.70	61.55	3.23	58.32
<b>TOTAL</b>	21.90	231.64	66.69	69.05	278.05	667.33	38.03	629.30
% MONTHLY TOTAL	4.40%	28.66%	0.00%	51.18%	15.76%	100.00%	5.25%	94.75%
% ANNUAL TO DATE TOTAL	3.3%	34.7%	10.0%	10.3%	41.7%	100.0%	5.70%	94.3%
% TOTAL	4.4%	28.7%	0.0%	51.2%	15.8%	100.0%	5.25%	94.8%

Monthly Production FY 18 vs FY 19



Cumulative Production FY18 vs FY19

